

Quick sizing reference

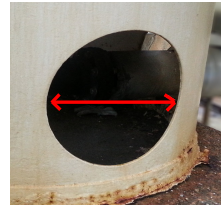
Velcro - Confined Space Control Covers

Measure opening and choose cover that is larger than your opening. Velcro is sewn vertically on both sides of cover. Therefore, you are able to select cover with the appropriate width and simply cut the top & bottom of cover to reduce height.

Example ~ For openings with no flange or protruding lip:

Measure diameter then ADD 4"
If opening is not round,
measure both width & height.

Picture sample:
 $20'' \text{ opening} + 4'' = 24''$
=
X-SMALL
(24"W x 24"H cover)

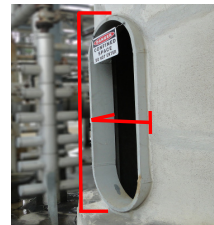


Example 2 ~ For openings with protruding lip or nozzle:

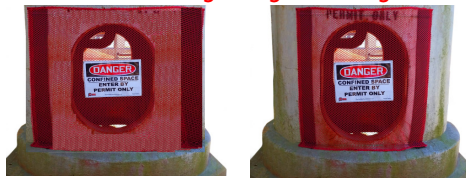
Measure opening from outer edge to outer edge + 4"
If opening is not round, measure both width & height.

Picture sample:

Opening size from outer most point of protrusion = 22"W x 44"H
ADD 4" to top & bottom = 26" W x 48"H
=
LARGE



As you see here, various cover sizes will fit your opening. The end result is more or less cover extending along outer edges.



X-Small - cover size 24"W x 24"H (609 x 609mm)

Small - cover size 30"W x 30"H (762 x 762mm)

Medium - cover size 40"W x 40"H (1016x 1016mm)

Large - cover size 30"W x 54"H (762 x 1372mm)

X-Large - cover size 42"W x 68"H (1067 x 1727mm)