

Quick sizing reference

Magnetic Confined Space Control Covers

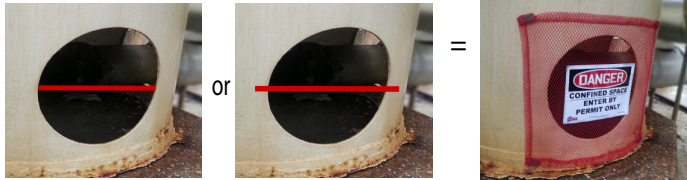
There are several easy ways to measure to ensure a proper fit of your magnetic cover.

For openings with no flange or protruding lip:

Measure diameter of opening and ADD 4". OR measure a few inches outside the opening.

If opening is not round, measure both width & height.

Select cover that fits that size. (Example: 20" opening + 4" = 24" = SMALL)



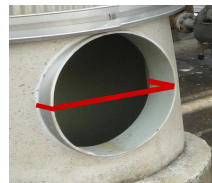
*Illustration for sizing purposes only.
Magnetic covers are round unless
ordered otherwise.

For openings with protruding lip or nozzle:

Measure from outer edge of lip to the other and ADD 4".

OR measure a few inches outside the opening.

If opening is not round, measure both width & height.



Magnetic covers easily conform
around odd flanges and obstructions.

X-Small-fits up to 22" (559mm) opening

Small-fits up to 30" (762mm) opening

Medium-fits up to 36" (914mm) opening

Large-fits up to 42" (1067mm) opening

X-Large-fits up to 52" (1321mm) opening